

## Sailing Instructions

### **1 Rules**

- 1.1 The series will be governed by the rules as defined in The Racing Rules of Sailing 2009-2012, the class rules of each fleet and by these sailing instructions.

### **2 Notices to Competitors**

- 2.1 Notices will be posted on the bulletin board at the Pavilion.
- 2.2 Any change to the sailing instructions will be posted no fewer than 30 minutes before the harbor gun on the day the changes take effect.

### **3 Signals Made Ashore**

- 3.1 Signals made ashore will be displayed from the committee boat.
- 3.2 The harbor gun will be signaled by one gun no less than thirty (30) minutes before the first warning signal for the first fleet.  
all other races, harbor gun is at 1300 hrs.

### **4 Schedule**

- 4.1 3-4 races are scheduled per race day, conditions permitting.

### **5 Class Flags**

- 5.1 The class flags/starting sequence will be:  
Flying Scot  
Y-Flyer  
Thistle  
Hobie-16 & 20

*In the event a fleet is absent from the starting sequence, the start for all succeeding fleets will be moved up accordingly.*

ONE BOAT FROM A FLEET DOES NOT CONSTITUTE A FLEET.

### **6 Safety**

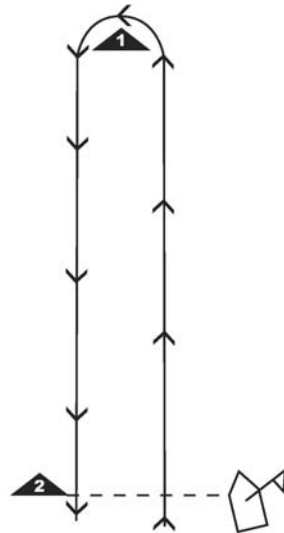
- 6.1 All boats must conform to their class rules, and are subject to inspection by the organizing authority or the judges at any time during the series.
- 6.2 Before the first warning signal for each race, all competitors shall check in with the race committee by sailing on starboard tack or towing past the stern of the anchored committee boat and hailing their sail number until acknowledged by a committee member. Infractions of this instruction may be protested by the race committee only.
- 6.3 A boat that retires from a race shall notify a race committee boat before leaving the race area. If this is not possible, the competitor shall notify a series representative immediately after arriving ashore.

# GMSC 2010 Centerboard Season

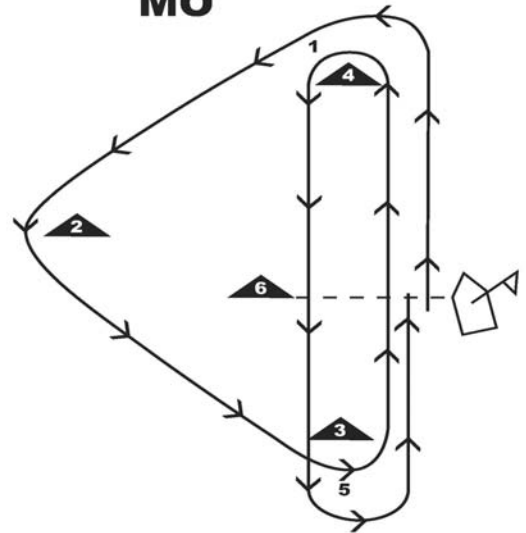
## 7 The Courses

7.1 The diagrams with the identifying letters below show the courses for all centerboard fleets, the order in which marks are to be passed and the side on which each mark is to be left.

**WL**



**MO**



**Course WL:** Modified Windward / leeward with start and finish at the leeward mark. This will be a downwind finish

**Course M** Modified Olympic Triangle with start and finish in the middle of the windward leg. of leeward mark and finish upwind of the windward mark.

**Note on triangle courses:** To provide greater interest and varying tactical options, the reaching (gybe) mark may not be in location shown on above course diagrams.

Optional for Courses:

An offset mark at the weather mark and/or a leeward gate may be used on a windward/leeward leg of any course.

7.2 The identifying letter of the course selected for the centerboards will be displayed transom race committee signal boat before or with the preparatory signal for each class.

## GMSC 2010 Centerboard Season

This changes ISAF

Rule 27.1. In the event of changing and/or lightening wind conditions, the courses for boats that have yet to start may have to be altered from those who have previously started. DO NOT ASSUME THAT THE COURSE WILL BE THE SAME FOR ALL FLEETS.

- 7.3 The number "2" displayed next to the course letters means twice around.
- 7.4 The approximate compass bearing from the starting line to Mark 1 will be displayed from the race committee signal boat.

When appropriate:

- 7.5 When the offset mark is used, boats shall round the offset mark after rounding the weather mark, and before proceeding downwind.
- 7.6 When there is a gate, boats shall sail between the gate marks from the direction of the previous mark and round either gate mark.
- 7.7 Under certain wind directions, the RC may move the finish line for the last race of the day from the middle of the course, to windward of the weather mark. Look for the committee boat on station at the finish line!

### **8 Marks**

- 8.1 Marks 1, 2, and 3 will be yellow cylinders.
- 8.2 New marks, as provided in instruction 11, Change of Position of the Next Mark, will be an orange tetrahedron.
- 8.3 The starting and finishing marks will be an orange cylindrical buoy with an orange flag on top.
- 8.4 The offset mark will be a round orange buoy.

### **9 The Start**

- 9.1 Races will be started using rule 26 as follows:

Signal	Flag and sound	Minutes before start
Warning	Class flag; 1 sound	5
Preparatory P, I, Z, Z and I, or black flag;	1 sound	4
One-minute	Preparatory flag removed; 1 long sound	1
Start	Class flag removed; 1 sound	0

- 9.2 The lowering of Code Flag L with one sound signal will take place 1 minute before the warning signal of the first fleet in each race.
- 9.3 Classes will start in the order shown in SI 5. The warning signal for each succeeding class shall be the starting signal of the preceding class.

## GMSC 2010 Centerboard Season

- 9.4 A boat shall start within four minutes of her starting signal. Any boat(s) starting later than 4 minutes shall be scored DNS for that race.
- 9.5 The starting line will be between a staff displaying an orange flag on the race committee signal boat and the starting mark.
- 9.6 Boats whose preparatory signal has not been made shall keep clear of the starting area and of all boats whose preparatory signal has been made.

### **10 Recalls**

- 10.1 When an individual recall is signaled, the race committee will attempt to hail the sail number(s) of the boat(s) that are OCS. When the Round-an-End Rule is in effect, the race committee may hail sail numbers during the minute before the start.
- 10.2 The race committee procedure for hailing boats that were OCS shall not be grounds for redress.
- 10.3 After a general recall, the starting sequences for all fleets shall continue as before and the recalled fleet shall move to the back of the rotation.

### **11 Change of Position of the Next Mark**

To change the position of the next mark, the race committee will lay a new mark and remove the original mark as soon as practicable. The change will be signaled before the leading boat has begun the leg, although the new mark may not yet be in position. An RC boat displaying Code Flag C will be on station at mark beginning the change and shall notify each affected class with a sound signal and approximate compass course to next mark. Any mark to be rounded after rounding the new mark may be relocated to maintain the original course configuration. When in a subsequent change a new mark is replaced, it will be replaced by an original mark.

### **12 The Finish**

- 12.1 The finishing line will be between a staff displaying an orange flag on a race committee boat and the finishing mark or nearby mark.
- 12.2 The finish line is an obstruction. Do not cross unless finishing.
- 12.3 After finishing, all boats shall vacate the finishing area and sail out to starboard side of race course clear of boats still racing. See Racing Rules of Sailing Section D, Rule 22.

## GMSC 2010 Centerboard Season

### **13 Protests**

- 13.1 Upon finishing each race, a boat intending to protest shall immediately, without consultation with instructors or spectators, notify the race committee of her intent to protest and, if possible, the sail number of the protested boat. (This adds to rule 61.1) This action shall be delayed if the race committee personnel are busy finishing other boats and shall be completed at first appropriate opportunity. All boats intending to protest shall follow the guidelines set forth by ISAF Rules 60-62.2 EXACTLY, no exceptions.
- 13.2 Protests shall be written on forms available at RC boat and/or the pavilion and delivered to race committee within 1 hour after the race committee boat docks.

### **14 Penalties**

- 14.1 ISAF Rule 44.2 Two-Turns Penalty shall apply unless altered by individual fleet or class rules. A boat that has taken a penalty shall notify the Race Committee at end of said race.

### **15 Scoring**

- 15.1 Scoring is at the discretion of each fleet concerning throw-outs, DSQ's, etc.

### **16 Discipline**

See Racing Rules of Sailing, Part 1 -- Fundamental Rules